

Chinquapin Hunting

Collected from Walt Michael

Arr. Alexander Mitchell

Driving Old Time

Musical score for Chiquapin Hunting, featuring four staves of music in G major and 2/4 time. The first two staves contain the main melody with a repeat sign and first ending. The last two staves provide a bass line accompaniment. Chords are indicated above the notes: D, A, D, Em, G, D, Em, G, A.

Benton's Dream

Benton Flippin, ©1973

Reel

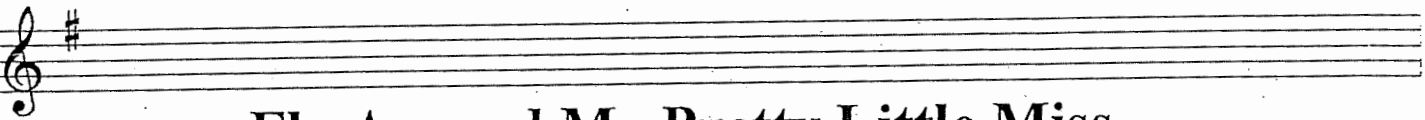
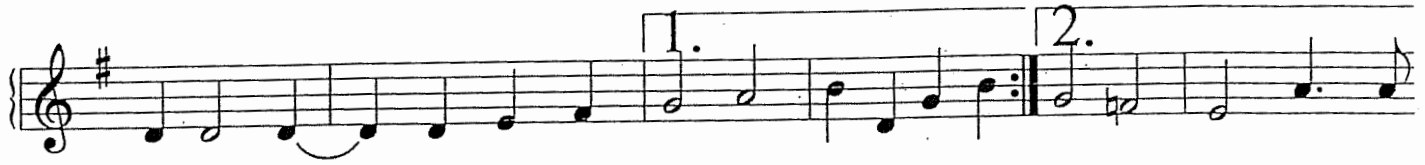
Musical score for Benton's Dream, featuring four staves of music in G major and 2/4 time. The first two staves contain the main melody with a repeat sign and first ending. The last two staves provide a bass line accompaniment. Chords are indicated above the notes: A, G, A, A, E, A, G, A. Dynamics include *f* and *2*.

Sadie at the Back Door

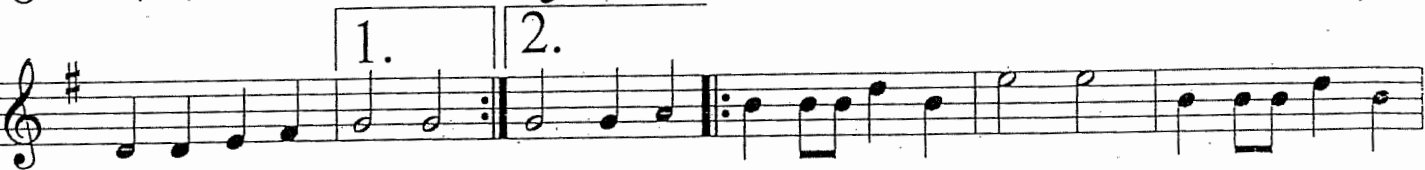
D mixolydian

Musical score for Sadie at the Back Door, featuring four staves of music in D mixolydian mode and 4/4 time. The first two staves contain the main melody with a repeat sign and first ending. The last two staves provide a bass line accompaniment. Chords are indicated above the notes: D, C, G, C, G, D, C, G, C, G, A, D, A, D. Dynamics include *1.* and *2.*

Evalina



Fly Around My Pretty Little Miss



Julia Delaney

Musical notation for Julia Delaney's piece, featuring four staves of music in D minor. The chords are: Dm, C, Dm, Am, Dm. The piece includes repeat signs and first/second endings.

SAINT ANNE'S REEL

Musical notation for Saint Anne's Reel, featuring four staves of music in D Major. The chords are: D Major, A, D, G, D, G, A, D, G, A, D. The piece includes repeat signs and first/second endings.

Growling Old Man and Grumbling Old Woman

Musical notation for Growling Old Man and Grumbling Old Woman, featuring four staves of music in D Major. The chords are: Am, D, Am, G, Am, G, Am, D. The piece includes measure numbers 6, 10, and 15, and is marked as Traditional.

Lilting Banshee

Jig

Musical score for Lilting Banshee, a jig in G major and 6/8 time. The score consists of four staves of music. The first staff begins with a treble clef, a key signature of one sharp (F#), and a 6/8 time signature. The melody is written in eighth notes. Chord annotations above the staff are Am, G, Em, D, and G. The second staff continues the melody with chord annotations Am, G, Em, G, and Am. The third staff begins with a repeat sign and has chord annotations Am, G, Em, D, and G. The fourth staff ends with a double bar line and a repeat sign, with chord annotations Am, G, Em, G, and Am.

Swallowtail Jig

Jig

Musical score for Swallowtail Jig, a jig in D major and 6/8 time. The score consists of four staves of music. The first staff begins with a treble clef, a key signature of two sharps (F# and C#), and a 6/8 time signature. The melody is written in eighth notes. Chord annotations above the staff are Em, D, and Bm. The second staff continues the melody with chord annotations Em, D, and Em. The third staff begins with a repeat sign and has chord annotations Em and D. The fourth staff ends with a double bar line and a repeat sign, with chord annotations Em, D, Bm, and Em.

Poppies & Corn

by Claudio Buchwald; arr. Alexander Mitchell

Smooth, marchy reel

Musical score for "Poppies & Corn" in G major, 2/4 time. The score consists of four staves. The first staff begins with a G chord and a repeat sign. The second staff includes G, C, D, and G chords. The third staff includes D and C chords. The fourth staff includes D, C, D, and G chords. The piece concludes with a double bar line and repeat dots.

Nixon's Farewell

Curt Bouterse © 1974

Reel

Musical score for "Nixon's Farewell" in D major, 2/4 time. The score consists of four staves. The first staff begins with a D chord and a repeat sign. The second staff includes D, G, D, and A chords, with first and second endings marked above the final two measures. The third staff includes D, G, D, D, G, and A chords. The fourth staff includes D, G, D, D, and A chords, with first and second endings marked above the final two measures. The piece concludes with a double bar line and repeat dots.

Nail That Catfish to the Tree

Steve Rosen © 1985

Reel

Musical score for "Nail That Catfish to the Tree" in G major, 2/4 time. The score consists of four staves. The first staff begins with a G chord and a repeat sign. The second staff includes G and D chords. The third staff includes C and D chords. The fourth staff includes C, D, G, and D chords, with first and second endings marked above the final two measures. The piece concludes with a double bar line and repeat dots.

Shenandoah Falls

Musical score for 'Shenandoah Falls' in D major, 4/4 time. The score consists of four staves of music. The first two staves feature a melody with triplets and are accompanied by chords A, D, A, and E. The last two staves feature a bass line with chords Bm, A, E, and A. The piece concludes with a double bar line and repeat dots.

WHISKEY BEFORE BREAKFAST

Old-Time

D Major

Musical score for 'Whiskey Before Breakfast' in D major, 4/4 time. The score consists of four staves of music. The first two staves feature a melody with eighth-note patterns, accompanied by chords A, D, G, D, and A. The last two staves feature a bass line with chords D, A, G, D, G, and D. The piece includes first and second endings, both concluding with chords A and D.

OLD JOE CLARK

A Major

Musical score for 'Old Joe Clark' in A major, 4/4 time. The score consists of three staves of music. The first two staves feature a melody with eighth-note patterns, accompanied by chords A and (E) G. The last staff features a bass line with chords A, E, and A. The piece includes first and second endings, both concluding with chord A.

Waterbound

Traditional

Musical score for 'Waterbound' in G major (one sharp). The score consists of four staves of music. The first staff starts with a treble clef and a common time signature. Chords A, E, D, and A are indicated above the notes. The second staff begins at measure 5 and includes chords A, D, A, E, and A. The third staff begins at measure 9 and includes chords D and A. The fourth staff begins at measure 14 and includes chords D, A, E, and A. The piece concludes with a double bar line and repeat signs.

Ice House

Old time - for 1st grade
4/4 time

(c) Matt Gordon

Musical score for 'Ice House' in G major (one sharp). The score consists of five staves of music. The first staff starts with a treble clef and a common time signature. Chords A, E, and A are indicated above the notes. The second staff begins at measure 5 and includes chords A, E, and A. The third staff begins at measure 9 and includes chords E, D, E, and D. The fourth staff begins at measure 13 and includes chords E, D, E, D, and A. The fifth staff begins at measure 17 and includes chords E and A. The piece concludes with a double bar line and repeat signs.